

Background

There is a trend in electric vehicle design to increase the DC voltage. At the same time, new wide-bandgap transistors are becoming more common in the inverter due to their superior on-state resistance, and fast switching speed which reduces the losses. However, the fast switch speed and high voltage result in a large voltage (dv/dt) and current (di/dt) slew rates, which have a negative impact on both EMI and the machine winding insulation.

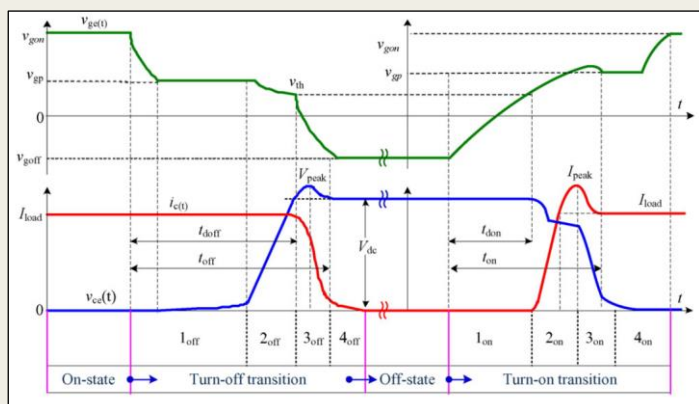
In the future, advanced gate driver methods could help to increase the lifetime of electric drives and reduce losses, helping to accelerate the electrification of the transport system.

Goal

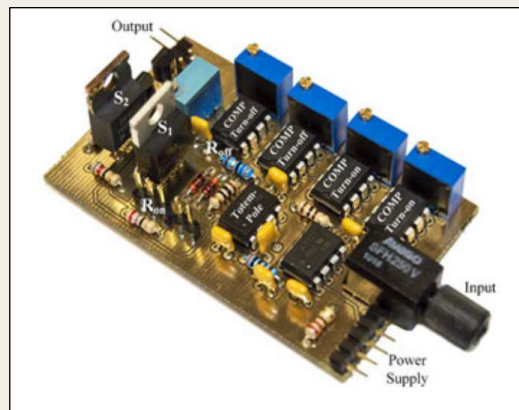
The goal is to identify promising techniques to control the dv/dt (and, if possible, the di/dt) of a medium voltage SiC MOSFET transistor under hard switching with inductive load. The method should be robust over a large current, voltage and temperature span.

Outline

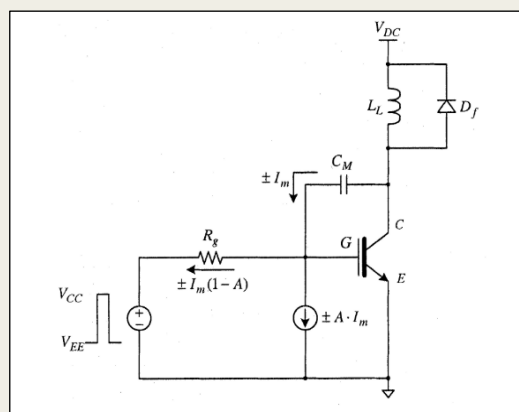
- Literature study of the state of the art in active gate control.
- Selection of control method
- Analysis and simulation control method.
- Prototyping and experimental validation.



Luo et. al. 2016



Camacho et al 2017



Park, S., Jahns, T. 2003

Student profile

Interest in the topic is a key factor in the selection of student.

Useful skills include:

- Power electronics & semiconductors
- Circuit simulation
- Knowledge of amplifier circuits.
- Control theory & control stability
- Circuit board design and prototyping

The project is suitable for 1-2 students.

Contact

Hannes Byden
Hannes.byden@iea.lth.se
 0738 45 71 97



LUNDS
UNIVERSITET

Use this page as a tool box.
Copy preformatted text and
other components on this
page and paste them into your
layout on page one.

Note that you must choose
to keep formatting when
pasting.

- Pe verum ratiosae veru
- doluptus num sundae velendam dolor ad et parum renti sit
- in nos ditaqua temquost, quidebit mi, aribustion con rest musam eaque plibus nobis exerunt, num sae velignit, sam
- Pe verum ratiosae verum sam, nulliam everepe ratibus

Num sus dolori am dolore modis iniae et iunt quos eosam quis niscia plaut veliqua tibeaquim inis ipis prem rendenda provit, suntorae.

Faciet estibus et eaquaspis es rem quas nem dolupta dolor moles eictio. Ut quam, earum voluptu.

Rat faceperspe ande odi cum rem sitatia volupta que veris dempore rrovid ma volor apere occae volupta testorati ut eatur rerferae nus.

NUM SUS DOLORI

Am dolore modis iniae et iunt quos eosam quis niscia plaut

NONSEQUUNT ES VELICIT

Num sus dolori am dolore modis iniae et iunt quos eosam quis niscia plaut veliqua tibeaquim inis ipis prem rendenda provit, suntorae.

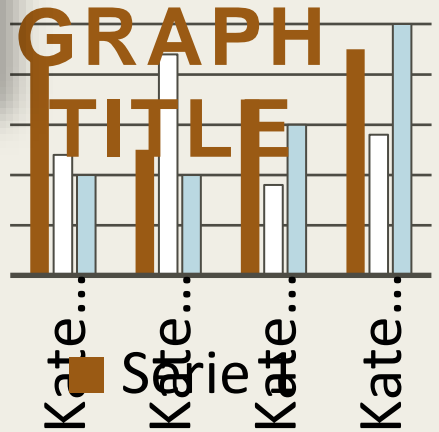
Faciet estibus et eaquaspis es rem quas nem dolupta dolor moles eictio. Ut quam, earum voluptu. Rat faceperspe ande odi cum rem sitatia volupta que veris dempore rrovid occae volupta testorati ut eatur rerferae nus.

Faciet estibus et eaquaspis es rem quas nem dolupta dolor moles eictio. Ut quam, earum voluptu.

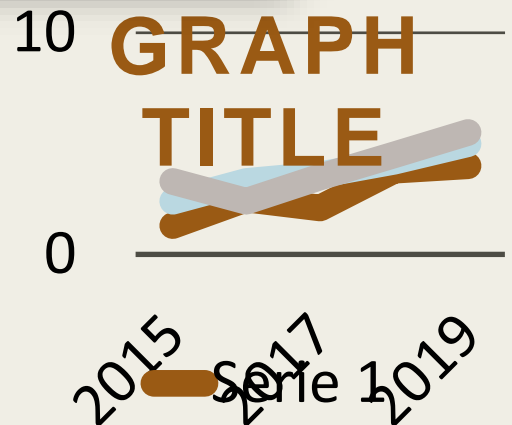
Nonsequunt es velicit impossim ventius es aspient, con net aspedit, quis con eos modit audisin ihictepiducietur aut ut rem quod pro el ium iunt. Nienda nobistrum fuga.

- Num sus dolori am dolore modis iniae et iunt quos eosam
- Quis niscia plaut veliqua tibeaquim inis ipis prem rendenda provit, suntorae
- Faciet estibus et eaquaspis

4
3
2
1
0



To use the graph templates, right click on the graphs to edit data in excel.



Place other logotypes at the bottom of the poster as shown here.

Knut and Alice
Wallenberg
Foundation

